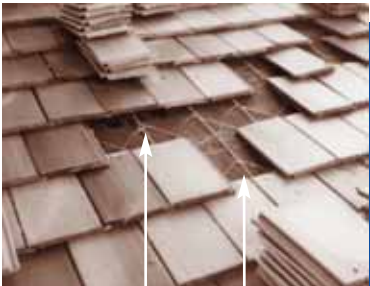


TWISTED WIRE TYLE-TYE® SYSTEM



Twisted wire

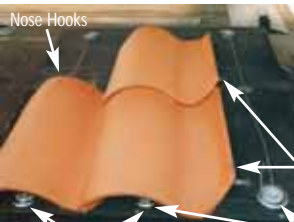
Tie wire bridle using 1 tie wire through both holes of shingle then tied into system at 45° angle



Wind Lock Nose Hooks

Pre-tied tie wires

Twisted Wire Tyle-Tye®



Wind Lock Nose Hooks wired into Tyle-Tye® at eave course

Double plate anchor assembly

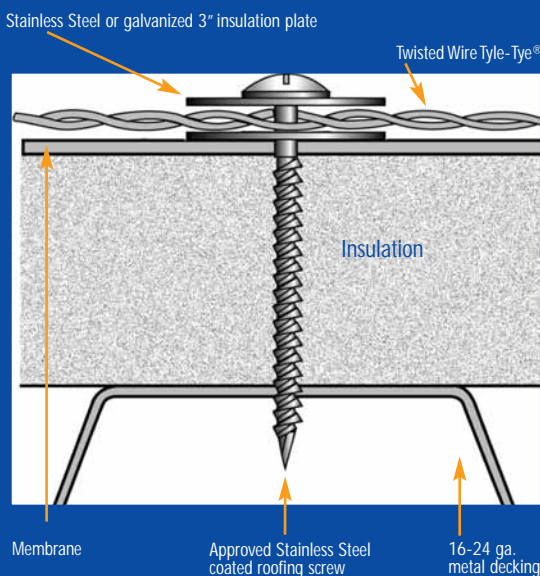
Twisted Wire Tyle-Tye® is a continuous element of twisted wire that is attached by means of a special anchor to the roof deck through the required underlayment. The continuous element consists of two wires twisted together with a loop or eyelet approximately every six (6) inches. The loops or eyelets in the twisted wire are used to accommodate whichever wire is selected to fasten individual roof tiles.

A loop in the Twisted Wire Tyle-Tye® is slipped down over the stem of the special anchor, and the two stem elements are then bent apart to engage the wire tie and to prevent it from slipping off. The double plate anchor system can be used also to fasten the Twisted Wire Tyle-Tye® to the roof deck.

Individual roof tiles are tied into the loops of the Twisted Wire Tyle-Tye® by means of a Tie Wire of similar metal. Besides being anchored at ridge, hip and eave, the Twisted Wire Tyle-Tye® System is anchored at 5 foot intervals as required to avoid over-stressing any one anchor point. In no case shall the anchor spacing be longer than 10 feet.

For further information refer to the Twisted Wire Tyle-Tye® Specifications.

Double Plate Anchor



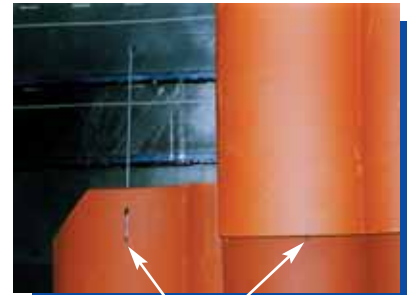
TYLE-TYE® TILENAIL



The Tyle-Tye® TileNail System is a unique fastener used in the cover portion of clay 2-pc Mission, clay "S" or most concrete tiles that incorporates a Wind Lock and a nail in one fastener. The TileNail eliminates breakage because the nail is away from the tile. (They are approved to all slopes and are particularly suited to mansard applications.)

The TileNail outperforms any direct deck nailed roof tile by securing the tile at two points with one fastener. A Wind Lock Nose Hook is incorporated into the front part of the TileNail holding the butt end of the next tile, while the shaft is slipped into the hole of the head end of roof tile being nailed. The uplift forces acting upon the butt end of the tile will continue to drive the nail portion of the fastener deeper into the deck. In addition the TileNail prevents fractures and/or breaks of the tile because the hammer is never near the brittle clay or concrete.

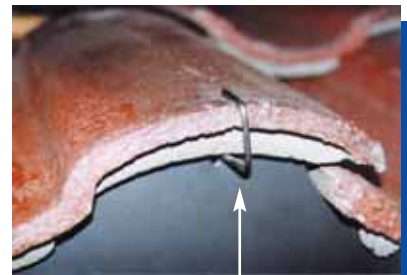
TileNails are available with or without a Wind Lock Nose Hook. When specifying TileNails with Wind Lock Nose Hook, specify 3" headlap for clay "S" tiles and concrete tiles laid with a 3" headlap. For those roof tiles requiring a 4" headlap, specify the 4" headlap TileNail.



TileNail with clay "S" tile



TileNail for concrete tile



TileNail with concrete high profile tile at eave with metal birdstop

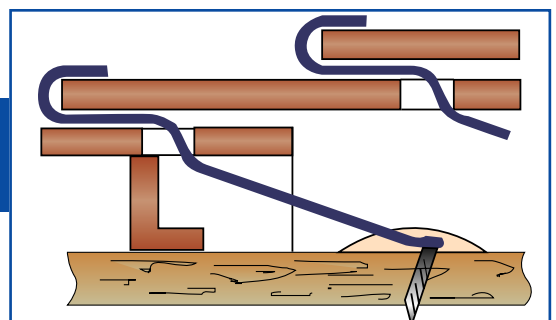
ALSO AVAILABLE

Copper and Stainless Steel Roofing Nails



Screws for Roof Tile and Tyle-Tye® System

Eave detail with booster tile



Newport Tool & Fastener Company, Inc., 2000 5th St., Norco, CA 92860

(800)645-7811

(951)739-6800

Fax (951)808-0034

www.newportfastener.com